






SPECIFICATIONS

CUSTOMER : _____
MODEL NO. : **GFTO101DA1280800V**
VERSION : **A**
DATE : **2017.12.28**
CERTIFICATION : **ROHS**
CUSTOMER SIGN : _____

QA Approved By	Approved By	Prepared By	Prepared By
			

晶發科技股份有限公司
GI FAR TECHNOLOGY CO.,LTD

新北市樹林區東豐街 81 號

No. 81, Dongfeng St, Shulin District, 23874, New Taipei City, Taiwan, R.O.C.

TEL: +886-2-8684-1188 FAX: +886-2-8684-8532



Revision Record

Data(y/m/d)	Ver.	Description	Note	page
2017.12.28	A	NEW		



Contents

1. General Specifications.....	4
2. Pin Assignment	5
3. Operation Specifications.....	7
3.1. Absolute Maximum Ratings	7
3.1.1. Current Consumption.....	7
3.1.2. Backlight Driving Conditions	7
3.2. Typical Operation Conditions	8
3.3. Power Sequence	9
3.4. LVDS Signal Timing Characteristics	10
3.4.1. AC Electrical Characteristics	10
3.4.2. Timing Table.....	11
3.4.3. LVDS Data Input Format	12
4. Optical Specifications.....	13
5. Reliability Test Items.....	17
6. General Precautions.....	18
6.1. Safety	18
6.2. Handling	18
6.3. Static Electricity	18
6.4. Storage	18
6.5. Cleaning	18
6.6. Quality warranty period.....	18
7. Mechanical Drawing.....	19
8. Package Drawing	20
8.1 Package Material Table	20
8.2 Packaging Quantity	20
8.3 Packaging Drawing.....	21



1. General Specifications

Item	Specification	Remark
LCD size	10.1 inch(Diagonal)	
Driver element	a-Si TFT active matrix	
Resolution	1280 × 3(RGB) × 800	
Display mode	Normally Black, Transmissive	
Dot pitch	0.0565(W) X 0.1695(H) mm	
Active area	216.96(W) X 135.60(H) mm	
Module size	229.46(W) X 149(H) X 4.8(D) mm	Note 1
Surface treatment	HC	
Color arrangement	RGB-stripe	
Interface	LVDS	
Backlight power onsumption	4.68 W (Typ.)	
Panel power consumption	0.7W (Typ.)	Note 2
Weight	277g (Typ.)	
Inversion	1+2line	
IC	HX8288*4&HX8695*1	

Note 1: Refer to Mechanical Drawing.

Note 2: Including T-con Board power consumption



2. Pin Assignment

A 40pin connector is used for the module electronics interface. The recommended model is FH52-40S-0.5SH manufactured by Hirose.

Pin No.	Symbol	I/O	Function	Remark
1	VCOM	P	Common voltage	
2	VDD	P	Power Voltage for digital circuit	
3	VDD	P	Power Voltage for digital circuit	
4	NC	-	No connection	
5	NC	-	No connection	
6	NC	-	No connection	
7	GND	P	Ground	
8	RXIN0-	I	- LVDS differential data input	R0-R5, G0
9	RXIN0+	I	+ LVDS differential data input	
10	GND	P	Ground	
11	RXIN1-	I	- LVDS differential data input	G1~G5, B0,B1
12	RXIN1+	I	+ LVDS differential data input	
13	GND	P	Ground	
14	RXIN2-	I	- LVDS differential data input	B2-B5,HS,VS, DE
15	RXIN2+	I	+ LVDS differential data input	
16	GND	P	Ground	
17	RxCLKIN-	I	- LVDS differential data input	LVDS CLK
18	RxCLKIN+	I	+ LVDS differential data input	
19	GND	P	Ground	
20	RXIN3-	I	- LVDS differential data input	R6, R7, G6, G7, B6, B7
21	RXIN3+	I	+ LVDS differential data input	
22	GND	P	Ground	
23	NC	-	No connection	
24	NC	-	No connection	
25	GND	P	Ground	
26	NC	-	No connection	
27	LED_PWM	O	CABC controller signal output for backlight	Note2



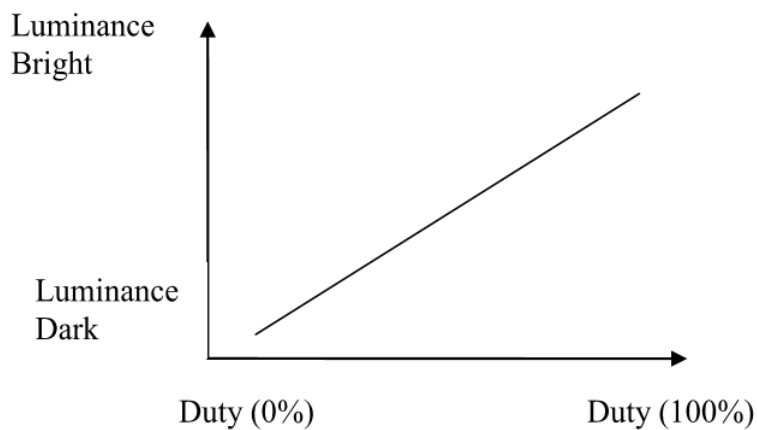
28	NC	-	No connection	
29	AVDD	P	Power for Analog Circuit	
30	GND	P	Ground	
31	LED-	P	LED Cathode	
32	LED-	P	LED Cathode	
33	NC	-	No connection	
34	NC	-	No connection	
35	VGL	P	Gate OFF Voltage	
36	NC	-	No connection	
37	CABC_EN	I	CABC Enable Input	Note1
38	VGH	P	Gate ON Voltage	
39	LED+	P	LED Anode	
40	LED+	P	LED Anode	

I: input, O: output, P: Power

Note 1: The setting of CABC function are as follows.

Pin	Enable	Disable
CABC_EN	High Voltage	Low Voltage or open

Note 2: LED_PWM is used to adjust backlight brightness.





3. Operation Specifications

3.1. Absolute Maximum Ratings

(Note 1)

Item	Symbol	Values		Unit	Remark
		Min.	Max.		
Power voltage	VDD	2.3	2.7	V	
	AVDD	8.0	8.4	V	
	V _{GH}	21.7	22.3	V	
	V _{GL}	-7.3	-6.7	V	
	V _{GH} -V _{GL}	-	-	V	
Operation Temperature	T _{OP}	-20	70	°C	
Storage Temperature	T _{ST}	-30	80	°C	
LED Reverse Voltage	V _R	-	5	V	Each LED
LED Forward Current	I _F	-	70	mA	Each LED

Note 1: The absolute maximum rating values of this product are not allowed to be exceeded at any times. Should a module be used with any of the absolute maximum ratings exceeded, the characteristics of the module may not be recovered, or in an extreme case, the module may be permanently destroyed.

3.1.1. Current Consumption

Item	Symbol	Values			Unit	Remark
		Min.	Typ.	Max.		
Current for Driver	I _{GH}	-	705	1000	uA	V _{GH} =22.0V
	I _{GL}	-	705	1000	uA	V _{GL} = -7.0V
	I _{VDD}	-	95	120	mA	V _{DD} =2.5V
	I _{AVDD}	-	45	70	mA	AV _{DD} =8.2V

3.1.2. Backlight Driving Conditions

Item	Symbol	Values			Unit	Remark
		Min.	Typ.	Max.		
Voltage for LED backlight	V _L	16.8	(19.5)	21	V	Note1
Current for LED backlight	I _L	200	240	280	mA	
LED life time	-	20,000	-	-	Hr	Note2

Note 1: The LED Supply Voltage is defined by the number of LED at Ta=25°C and I_L =200mA.

Note 2: The "LED life time" is defined as the module brightness decrease to 50% original brightness at Ta=25°C and I_L =200mA. The LED lifetime could be decreased if operating I_L is lager than 200mA.



3.2. Typical Operation Conditions

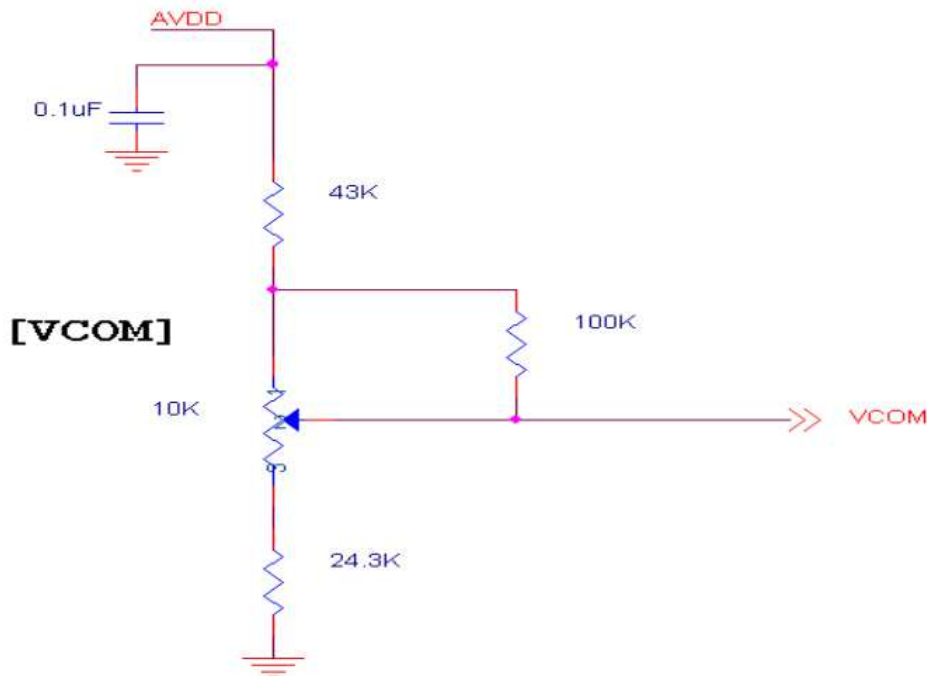
(Note 1)

Item	Symbol	Values			Unit	Remark
		Min.	Typ.	Max.		
Power voltage	VDD	2.3	2.5	2.7	V	Note2
	AVDD	8.0	8.2	8.4	V	
	V _{GH}	21.7	22	22.3	V	
	V _{GL}	-7.3	-7	-6.7	V	
Input signal voltage	VCOM	2.7	3.0	3.3	V	Note4
Input logic high voltage	V _{IH}	0.8 VDD	/	VDD	V	Note3
Input logic low voltage	V _{IL}	0	/	0.2 DV _{DD}	V	

Note 1: Be sure to apply VDD and V_{GL} to the LCD first, and then apply V_{GH}.

Note 2: VDD setting should match the signals output voltage (refer to Note 3) of customer's system board.

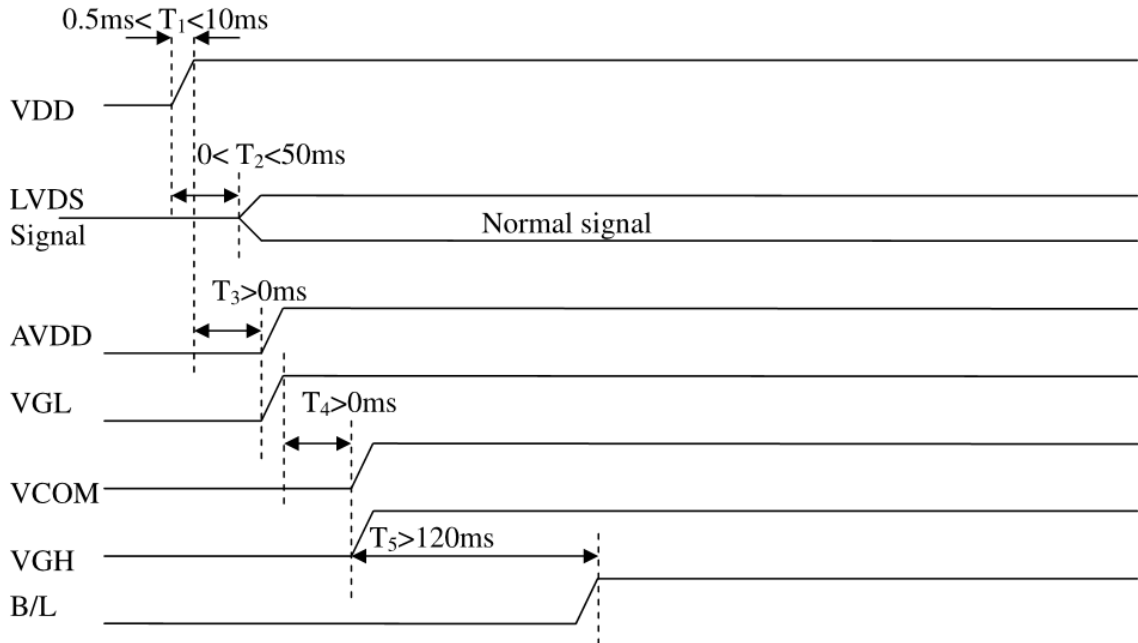
Note 4: Typical VCOM is only a reference value. It must be optimized according to each LCM. Be sure to use VR;



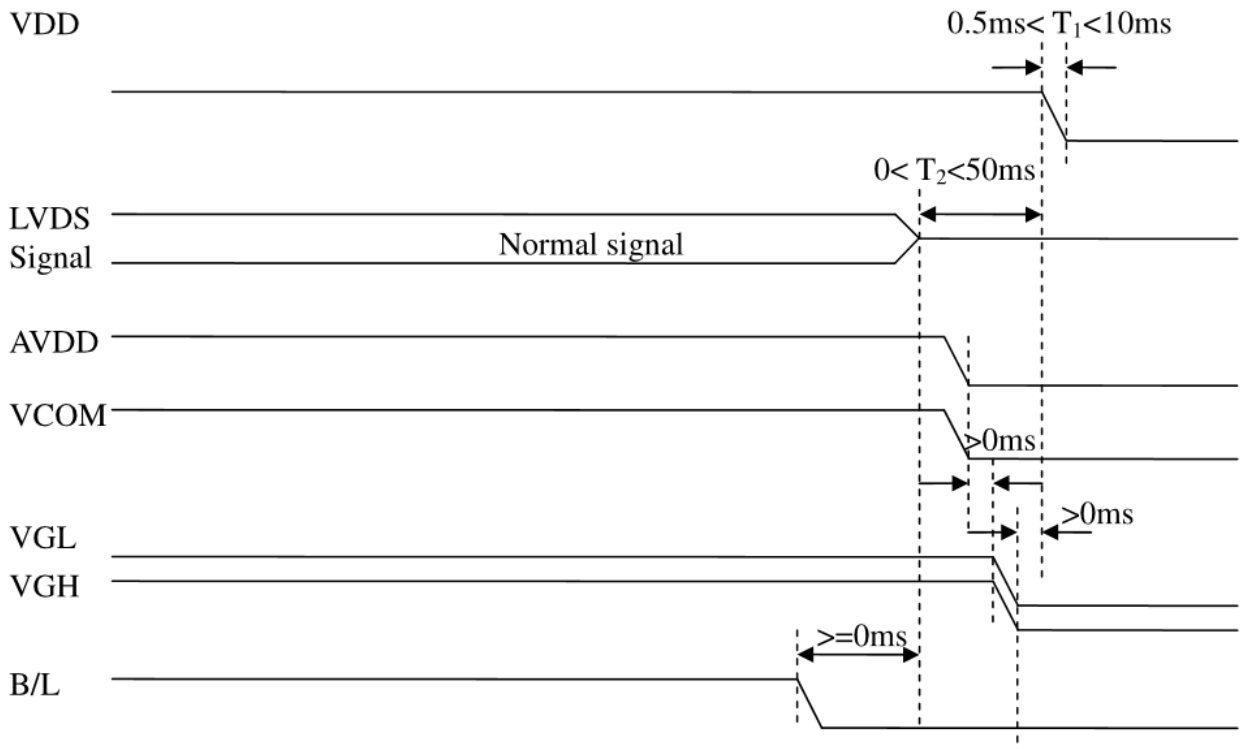


3.3. Power Sequence

a. Power on:



b. Power off:

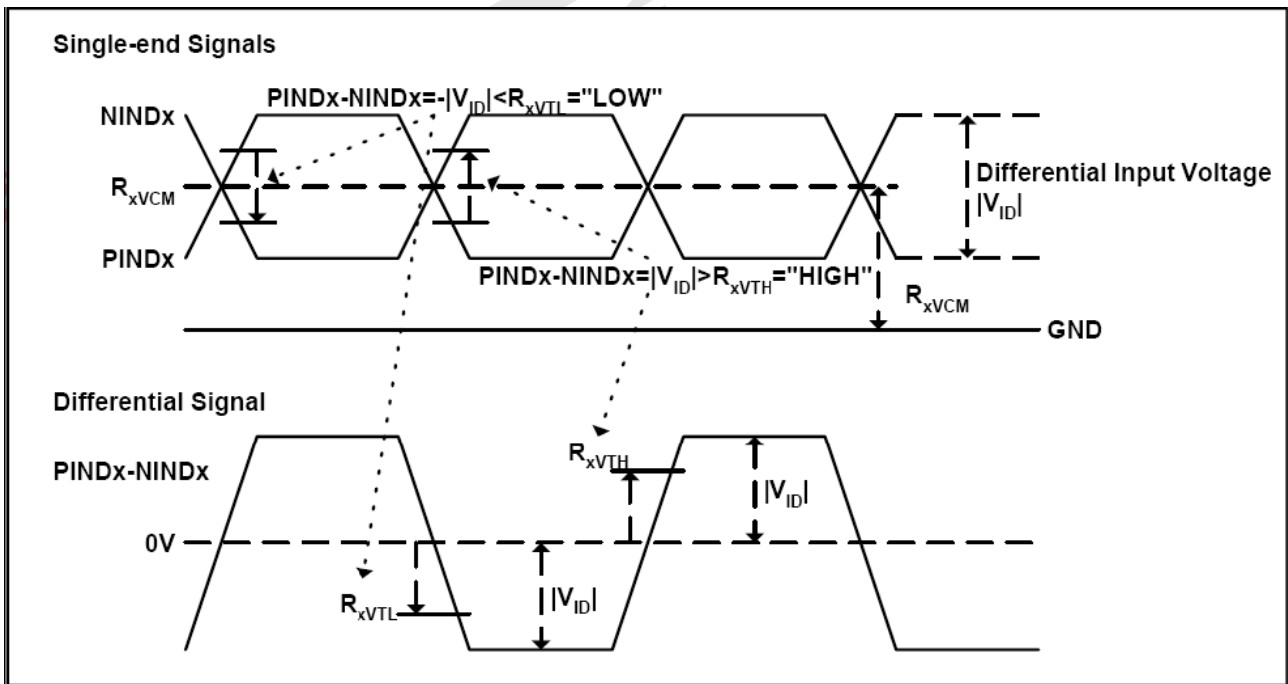




3.4. LVDS Signal Timing Characteristics

3.4.1. AC Electrical Characteristics

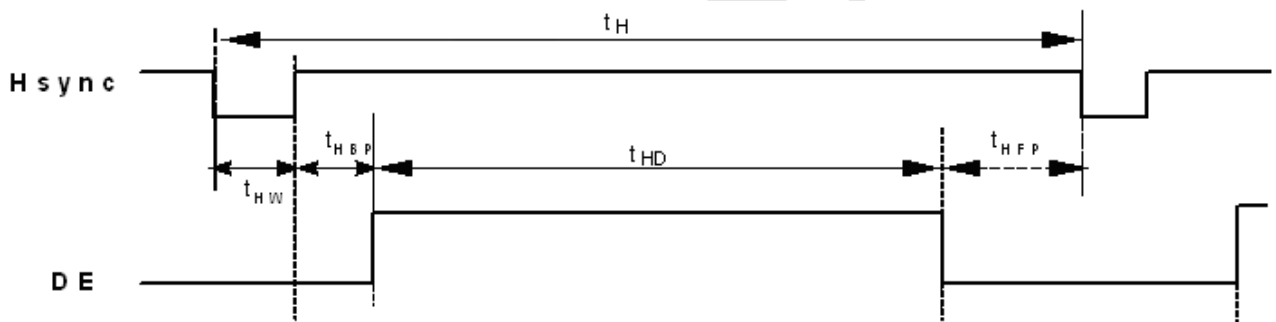
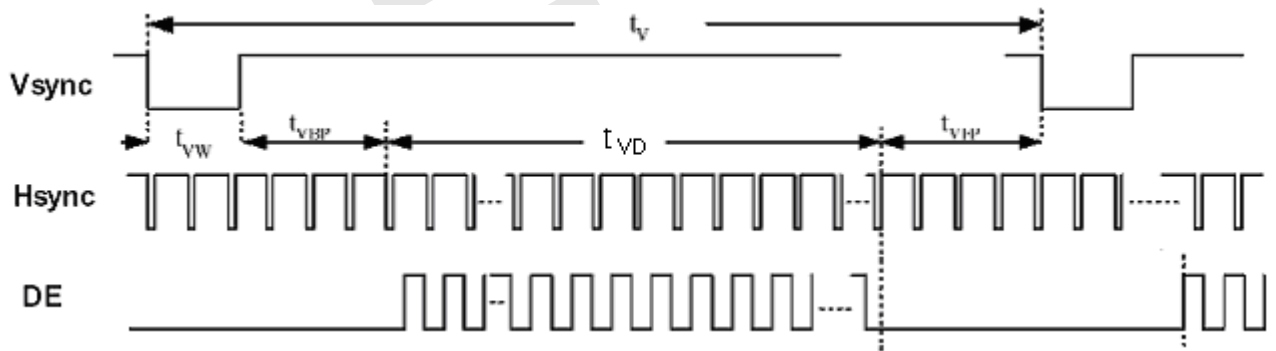
Item	Symbol	Values			Unit	Remark
		Min.	Typ.	Max.		
LVDS Differential input high Threshold voltage	R_{xVTH}	-	-	+100	mV	$R_{xVCM}=1.2V$
LVDS Differential input low Threshold voltage	R_{xVTL}	-100	-	-	mV	
LVDS Differential input common mode voltage	R_{xVCM}	0.7	-	1.6	V	
LVDS Differential voltage	$ V_{ID} $	200	-	600	mV	





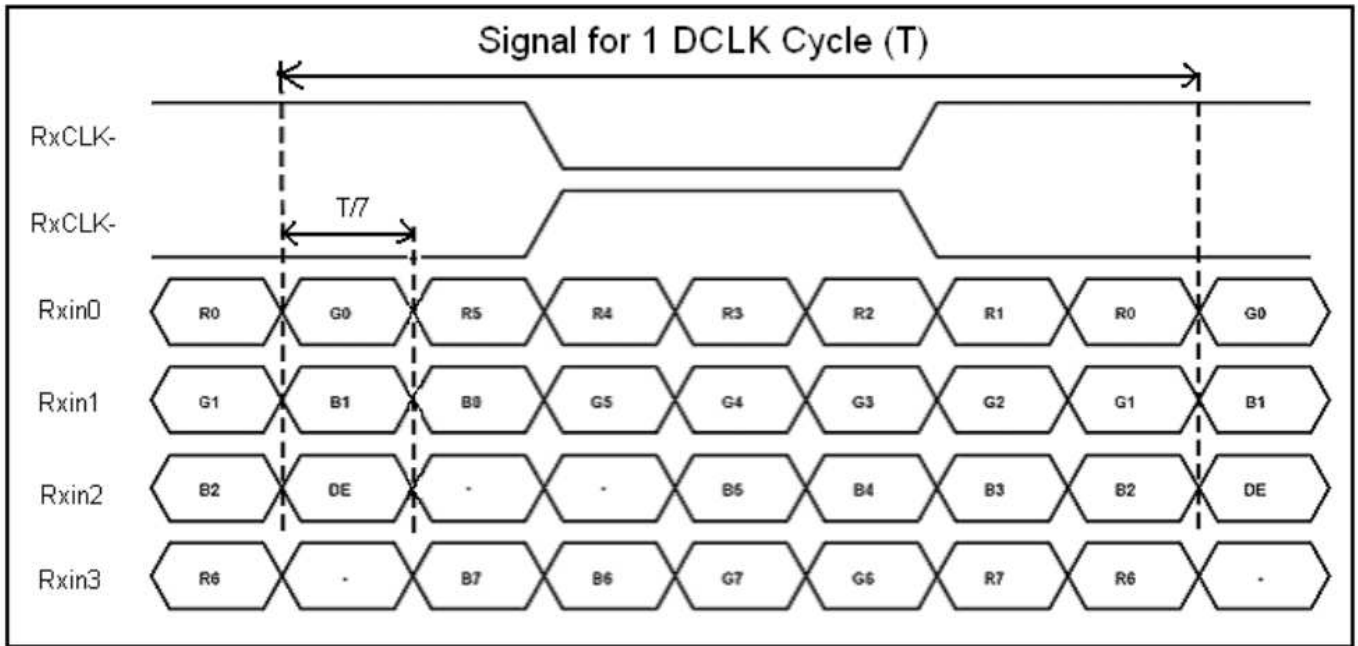
3.4.2. Timing Table

Item	Symbol	Values			Unit	Remark
		Min.	Typ.	Max.		
Clock Frequency	1/Tc	68.9	71.1	73.4	MHz	Frame rate =60Hz
Horizontal display area	tHD	1280			Tc	
HS period time	tH	1410	1440	1470	Tc	
HS Width +Back Porch +Front Porch	tHW+ tHBP+ tHFP	90	160	190	Tc	
Vertical display area	tVD	800			tH	
VS period time	tV	815	823	833	tH	
VS Width +Back Porch +Front Porch	tVW+ tVBP+ tVFP	15	23	33	tH	





3.4.3. LVDS Data Input Format





4. Optical Specifications

Item	Symbol	Condition	Values			Unit	Remark
			Min.	Typ.	Max.		
Viewing angle (CR≥ 10)	θ_L	$\Phi=180^\circ$ (9 o'clock)	75	85	-	degree	Note1
	θ_R	$\Phi=0^\circ$ (3 o'clock)	75	85	-		
	θ_T	$\Phi=90^\circ$ (12 o'clock)	75	85	-		
	θ_B	$\Phi=270^\circ$ (6 o'clock)	75	85	-		
Response time	T_{ON+}	Normal $\theta=\Phi=0^\circ$	-	10	20	Msec	Note3
	T_{OFF}		-	15	30	Msec	Note3
Contrast ratio	CR		600	800	-	-	Note4
Color chromaticity	W_X		0.26	0.31	0.36	-	Note2
	W_Y		0.27	0.32	0.37	-	Note5
Luminance	L		400	500	-	cd/m ²	Note6
Luminance uniformity	Y_U		75	80	-	%	Note7

Test Conditions:

1. VDD=2.5V, the ambient temperature is 25°C.
2. The test systems refer to Note 2.



Note 1: Definition of viewing angle range

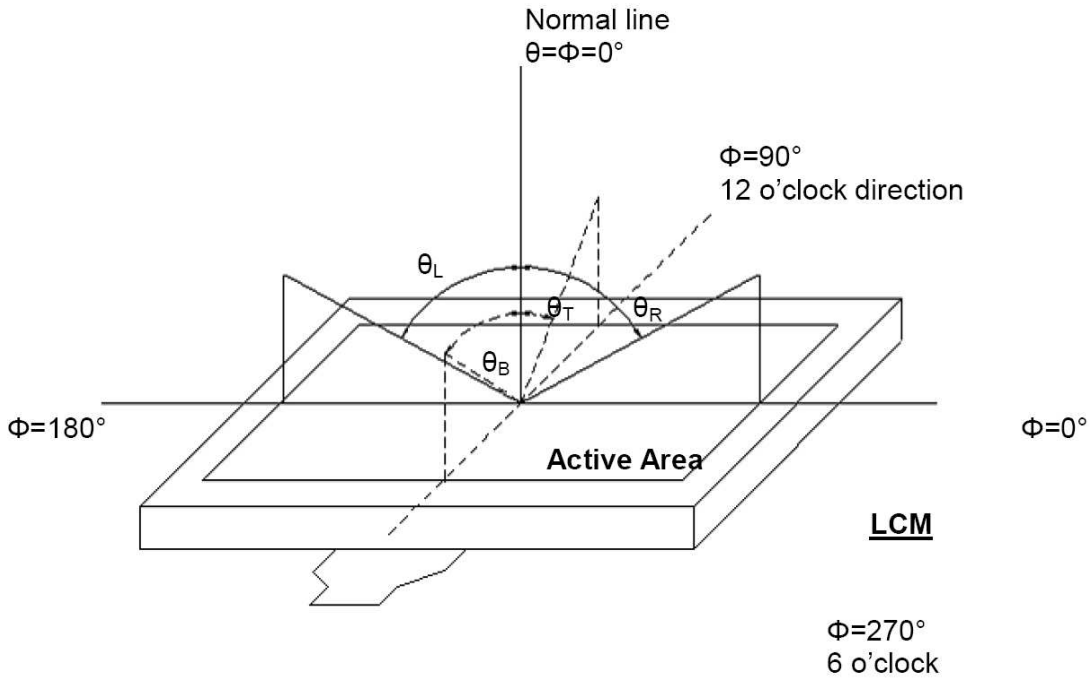


Fig. 4-1 Definition of viewing angle

Note 2: Definition of optical measurement system.

The optical characteristics should be measured in dark room. After 30 minutes operation, the optical properties are measured at the center point of the LCD screen. (Viewing angle is measured by ELDIM-EZ contrast/Height :1.2mm, Response time is measured by Photo detector TOPCON BM-7, other items are measured by BM-5A/Field of view: 1° /Height: 500mm.)

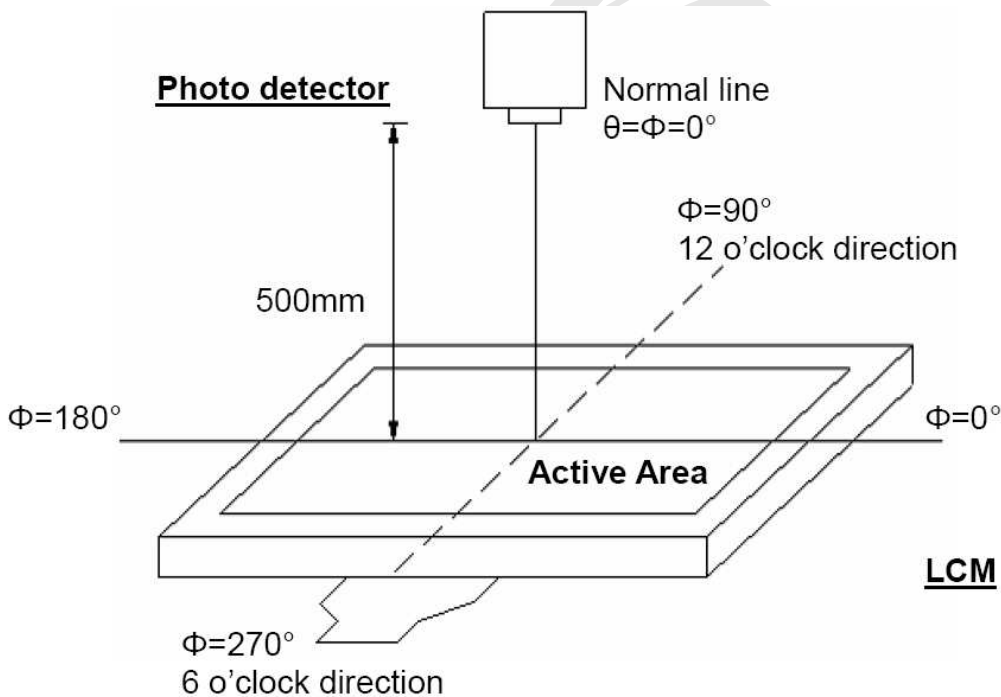


Fig. 4-2 Optical measurement system setup



Note 3: Definition of Response time

The response time is defined as the LCD optical switching time interval between “White” state and “Black” state. Rise time (T_{ON}) is the time between photo detector output intensity changed from 90% to 10%. And fall time (T_{OFF}) is the time between photo detector output intensity changed from 10% to 90%.

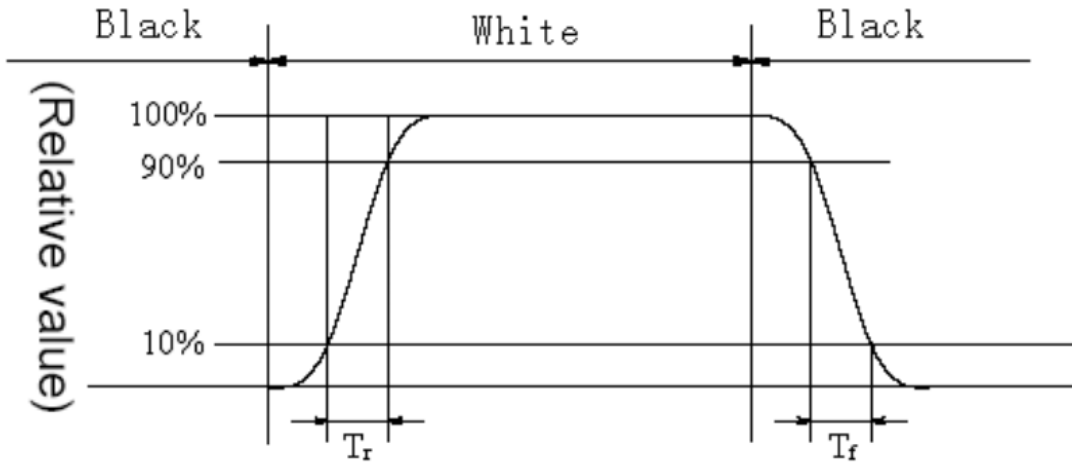


Fig. 4-3 Definition of response time

Note 4: Definition of contrast ratio

$$\text{Contrast ratio (CR)} = \frac{\text{Luminance measured when LCD on the "White" state}}{\text{Luminance measured when LCD on the "Black" state}}$$

Note 5: Definition of color chromaticity (CIE1931)

Color coordinates measured at center point of LCD.

Note 6: All input terminals LCD panel must be ground while measuring the center area of the panel. The LED driving condition is $I_L=200\text{mA}$.



Note 7: Definition of Luminance Uniformity

Active area is divided into 9 measuring areas (Refer to Fig. 4-4).Every measuring point is placed at the center of each measuring area.

$$\text{Luminance Uniformity } (Yu) = \frac{B_{min}}{B_{max}}$$

L-----Active area length W----- Active area width

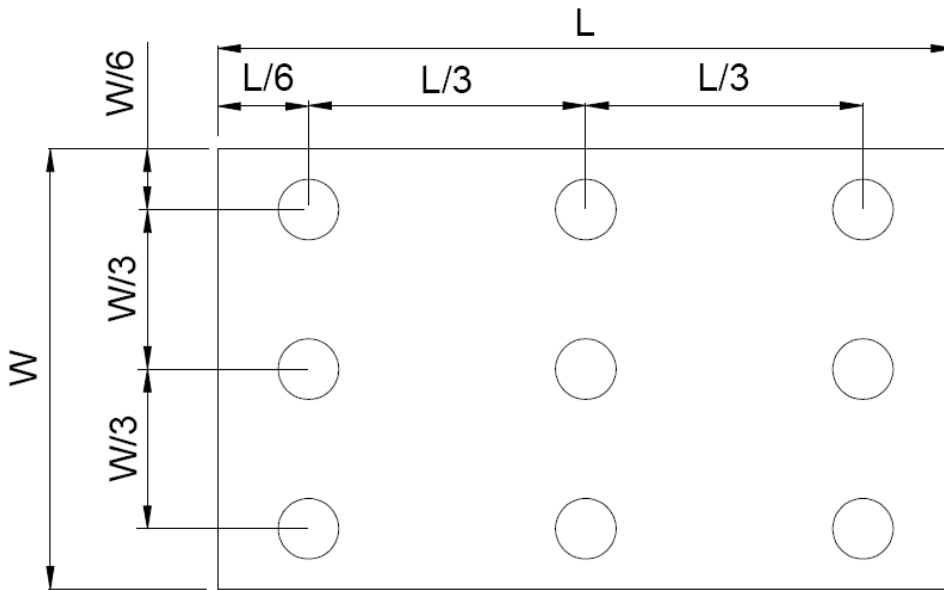


Fig. 4-4 Definition of measuring points

B_{max} : The measured maximum luminance of all measurement position.

B_{min} : The measured minimum luminance of all measurement position.



5. Reliability Test Items

(Note3)

Item	Test Conditions	Remark
High Temperature Storage	Ta = 80°C 240hrs	Note 1 , Note 4
Low Temperature Storage	Ta = -30°C 240hrs	Note 1 , Note 4
High Temperature Operation	Ts = 70°C 240hrs	Note 2 , Note 4
Low Temperature Operation	Ta = -20°C 240hrs	Note 1 , Note 4
Operate at High Temperature and Humidity	+40°C , 90%RH 240hrs	Note 4
Thermal Shock	-30°C 30min)→80°C 30 min for a total 100 cycles, start with cold temperature and end with high temperature	Note 4
Vibration Test	Frequency range:10~55Hz Stroke:1.5mm Sweep:10Hz~55Hz~10Hz 2 hours for each direction of X. Y. Z. (6 hours for total)	
Mechanical Shock	100G 6ms,±X, ±Y, ±Z 3 times for each direction	
Package Vibration Test	Random Vibration : ISTA-3A 1Hz~200Hz,Grms=0.53 Half hours for direction of Z.	
Package Drop Test	Height:60 cm 1 corner, 3 edges, 6 surfaces	
Electro Static Discharge	± 2KV, Human Body Mode, 100pF/1500Ω	Contact mode

Note 1: Ta is the ambient temperature of samples.

Note 2: Ts is the temperature of panel's surface.

Note 3: In the standard condition, there shall be no practical problem that may affect the display function.

After the reliability test, the product only guarantees operation, but don't guarantee all of the cosmetic specification.

Note 4: Before cosmetic and function test, the product must have enough recovery time, at least 2 hours at room temperature.



6. General Precautions

6.1. Safety

Liquid crystal is poisonous. Do not put it in your mouth. If liquid crystal touches your skin or clothes, wash it off immediately by using soap and water.

6.2. Handling

1. The LCD panel is plate glass. Do not subject the panel to mechanical shock or to excessive force on its surface.
2. The polarizer attached to the display is easily damaged. Please handle it carefully to avoid scratch or other damages.
3. To avoid contamination on the display surface, do not touch the module surface with bare hands.
4. Keep a space so that the LCD panels do not touch other components.
5. Put cover board such as acrylic board on the surface of LCD panel to protect panel from damages.
6. Transparent electrodes may be disconnected if you use the LCD panel under environmental conditions where the condensation of dew occurs.
7. Do not leave module in direct sunlight to avoid malfunction of the ICs.

6.3. Static Electricity

1. Be sure to ground module before turning on power or operating module.
2. Do not apply voltage which exceeds the absolute maximum rating value.

6.4. Storage

1. Store the module in a dark room where must keep at $25\pm 10^{\circ}\text{C}$ and 65%RH or less.
2. Do not store the module in surroundings containing organic solvent or corrosive gas.
3. Store the module in an anti-electrostatic container or bag.

6.5. Cleaning

1. Do not wipe the polarizer with dry cloth. It might cause scratch.
2. Only use a soft sloth with IPA to wipe the polarizer, other chemicals might permanent damage to the polarizer.

6.6. Quality warranty period

Within one year after shipment date. (excluding abnormal usage way and abnormal environments.)



7. Mechanical Drawing

ROHS

Notes:

1. Display Tape: 10.1 inch(Diagonal) IPS;
2. LCD Driver IC: Source IC: 1026,HX8288-A020P1250;
Gate IC: 800,HX8695-B01BP10200-LT.
- Δ3. The LCM Connector is FH52-40S-0.5SH;
4. O'Reference dimension;
5. Storage temperature: -30°/80°;
6. Operating temperature: -20°/70°;
7. General Tolerance +/- 0.30mm;
8. check item: 1-8.

		晶發科技股份有限公司 GI FAR TECHNOLOGY CO., LTD	
DATE	2017.12.28	REV	00
UNIT : mm			
SCALE : 1 / 1	Product :	GFT101DA1280800V	
SHEET : 1 / 1	DRAWN :	Rita	CHECKED : Hazel
日期	版本	修改內容	PAGE : 1 / 1



8. Package Drawing

8.1 Package Material Table

No.	Item	Model (Material)	Dimensions(mm)	Unit Weight (kg)	Quantity	Remark
1	LCM Module	GFTO101D1280800V	229.46X149.1X4.8	0.277	20 pcs	NA
2	Partition	BC Corrugated paper	512X349X230	0.891	1set	NA
3	Cushion	EPE	512X248X35	0.097	2 pcs	NA
4	Dust-Proof Bag	PE	700X530X0.05	0.0379	1 pcs	NA
5	Air Bag	LDPE	250X210	0.0051	20 pcs	NA
6	Carton	Corrugated paper	525X362X250	0.844	1pcs	NA
7	Total weight	7.61 Kg± 5%				

8.2 Packaging Quantity

Total LCM quantity in Carton: No. of Partition (1 Rows X Quantity per Row 20) = 20pcs



8.3 Packaging Drawing

