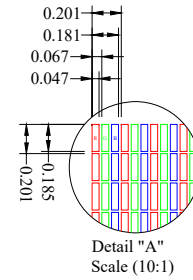
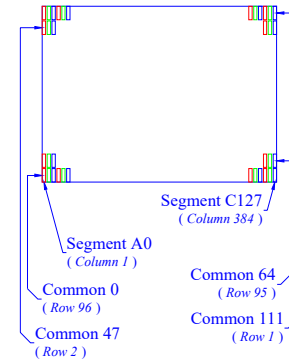
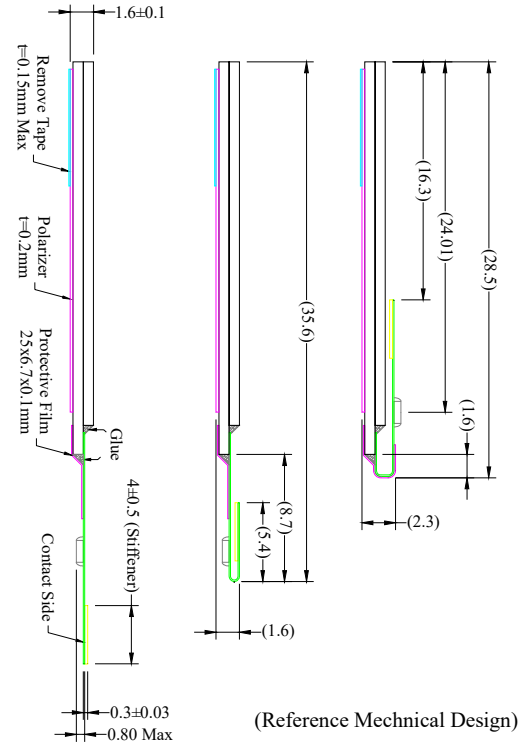
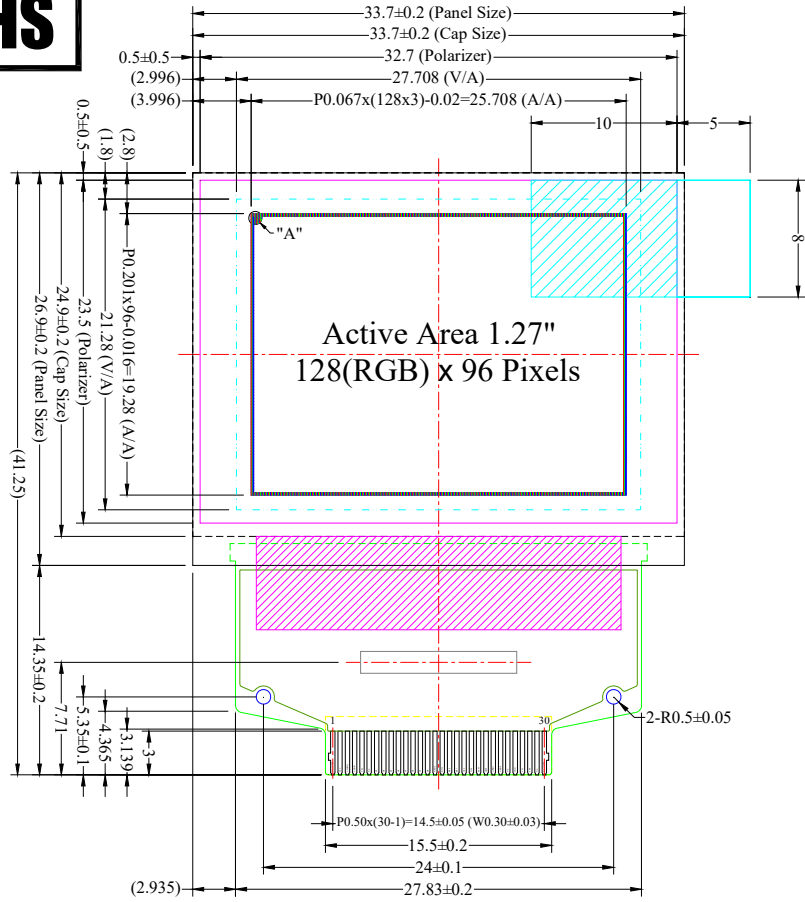


# RoHS




Pin	Symbol
1	N.C. (GND)
2	VCC
3	VCOMH
4	VDDIO
5	VSL
6	N.C.
7	D7
8	D6
9	D5
10	D4
11	D3
12	D2
13	D1
14	D0
15	E/RD#
16	R/W#
17	BS0
18	BS1
19	CS#
20	D/C#
21	RES#
22	IREF
23	GPIO1
24	GPIO0
25	N.C.
26	VDD
27	VCI
28	VSS
29	N.C.
30	N.C. (GND)

**Notes:**

1. Driver IC: SSD1351
2. Die Size: 10700um x 1500um
3. COF Number: SSD1351U3
4. Interface:  
8-bits 68XX/80XX Parallel, 3-/4-wire SPI
5. General Tolerance: ±0.30
6. The total thickness (1.70 Max) is without polarizer protective film & remove tape.  
The actual assembled total thickness with above materials should be 1.95 Max.

日期	版本	修改内容



**晶發科技股份有限公司**  
GI FAR TECHNOLOGY CO., LTD

<b>DATE</b>	2017.07.05	<b>REV</b>	00	<b>DRAWING NO.:</b> R01-2017050801
<b>UNIT :</b> mm	<b>Product :</b> FFOG128096A-HF			
<b>SCALE :</b> 1/1	<b>DRAWN:</b> Hazel	<b>CHECKED:</b> Donlin	<b>PAGE:</b> 1/1	